

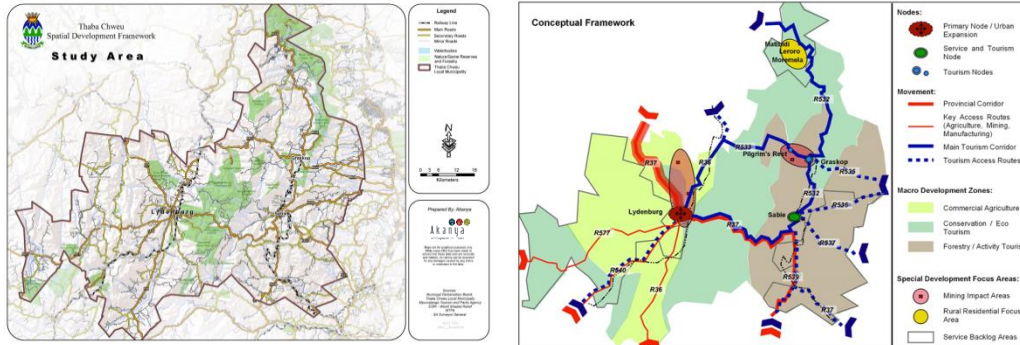
2015

Thaba Chweu Spatial Development Framework

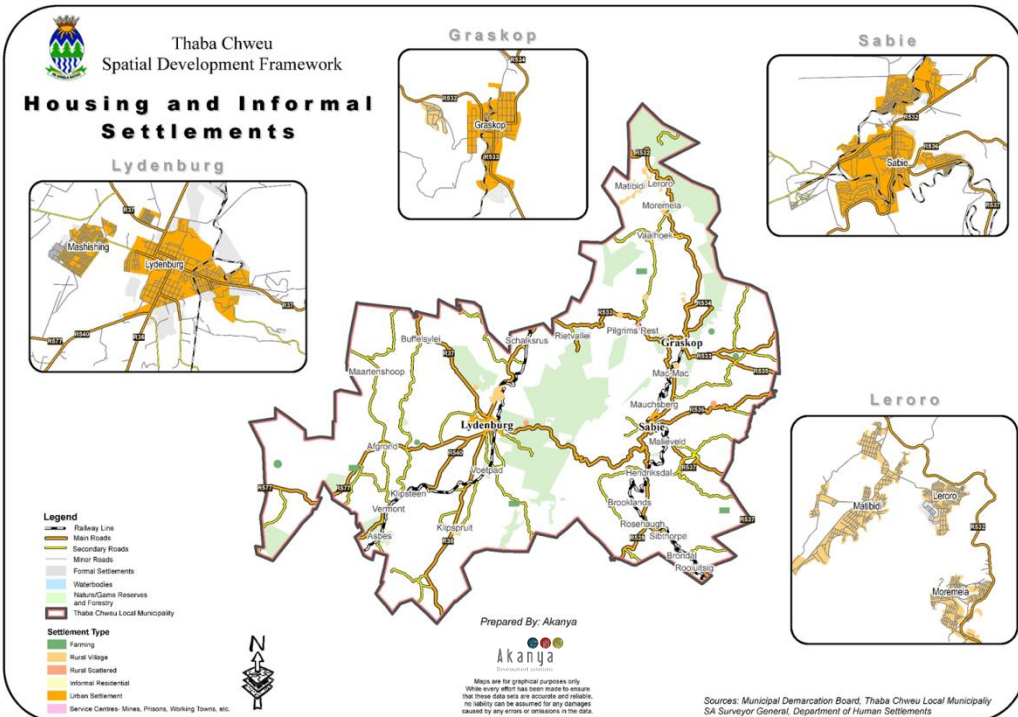
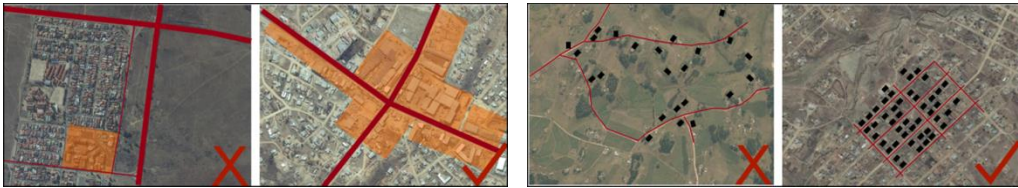


February 2015

SNIPPETS FROM THE SDF



Spatial principles to guide the allocation of land in the rural villages



PROJECT DETAILS

Project Name : Thaba Chweu Spatial Development Framework, 2014-15
 Client : National Department of Rural Development and Land Reform & Thaba Chweu Local Municipality
 Project by : Akanya Development Solutions

PROJECT DESCRIPTION

Thaba Chweu Local Municipality, together with the National Department of Rural Development and Land Reform (DRDLR), were the lead agencies in the project, and appointed Akanya Development Solutions to complete the wall-to-wall spatial development framework.

Several community visioning sessions were held and the outcome of those was an agreed spatial vision, which was *“Thaba Chweu an integrated and sustainable area, where economic sectors complement one another whilst conserving the ecosystems for the betterment of the communities”*.

The document tackled a range of aspects in relation to the following: (1) Policy Context and Planning Alignment; (2) Spatial Vision; (3) Status Quo Analysis; (4) Synthesis; (5) Spatial Development Framework; (6) Implementation Guidelines; (7) Monitoring and Review and Capital Investment Framework

The document provided detailed proposals for the following illustrated in maps:

- Primary Node: Lydenburg / Mashishing
- Tourism Node and Service Centre: Sabie or Simile Tourism Node: Graskop
- Tourism Node or Rural Residential: Pilgrim’s Rest
- Rural Village Cluster or Rural Service Centre: Moremela, Leroro and Matibidi

PROJECT OUTCOME

The Thaba Chweu Spatial Development Framework was concluded and subsequently approved by Council as the key yardstick for spatial structuring in the municipality.