



**rural development
& land reform**

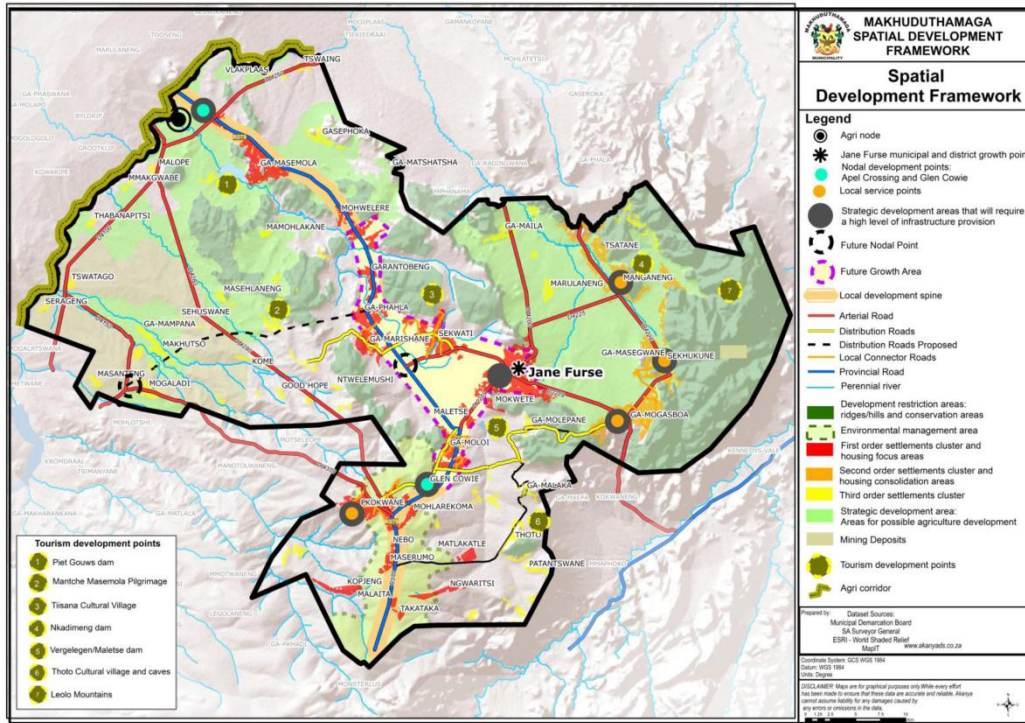
Department:
Rural Development and Land Reform
REPUBLIC OF SOUTH AFRICA



Makhuduthamaga LM Spatial Development Framework
DRAFT SPATIAL DEVELOPMENT FRAMEWORK

February 2015

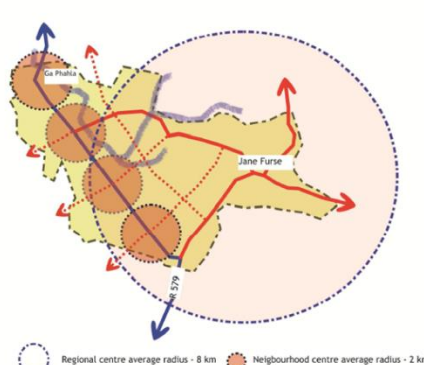
SNIPPETS FROM THE SDF



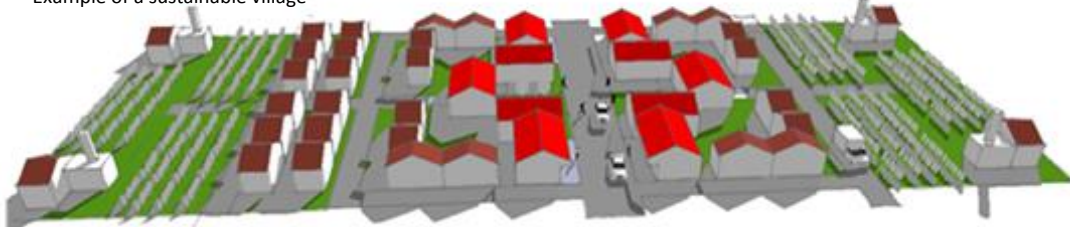
Glen Cowie strategic local development framework



Growth focus area



Example of a sustainable village



PROJECT DETAILS

Project Name : Makhuduthamaga Local Municipality Spatial Development Framework, 2014-15
 Client : Department of Rural Development and Land Reform and Makhuduthamaga Local Municipality
 Prepared by : Akanya Development Solutions

PROJECT DESCRIPTION

Akanya Development Solutions was commissioned by the National Department of Rural Development and Land Reform (DRDLR) to develop the Makhuduthamaga Local Municipality SDF.

The main components of the SDF were:

- A status quo and spatial analysis report
- A framework and concept that includes development guidelines and policy directives
- Action plan with strategic guidelines
- Conceptual land use budgets
- Implementation plan with estimated implementation programme
- Monitoring and evaluation

The main objective of the project was to create a credible SDF that meets the required standards through the implementation of the Comprehensive SDF Guidelines developed by DRDLR in 2010 and compliance with the Spatial Planning and Land Use Management Act (SPLUMA), 16 of 2013 requirements.

PROJECT OUTCOME

The SDF was successfully completed, signed off by DRDLR and approved by Makhuduthamaga Local Municipality as a credible SDF. More detailed development frameworks were prepared and included as part of the main document.