

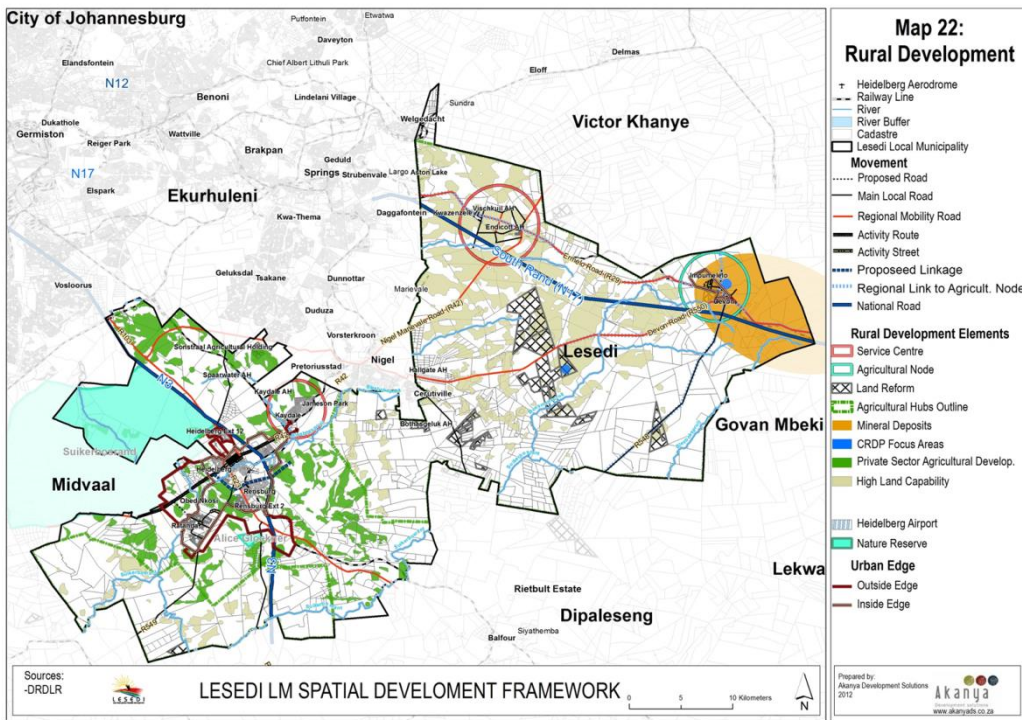
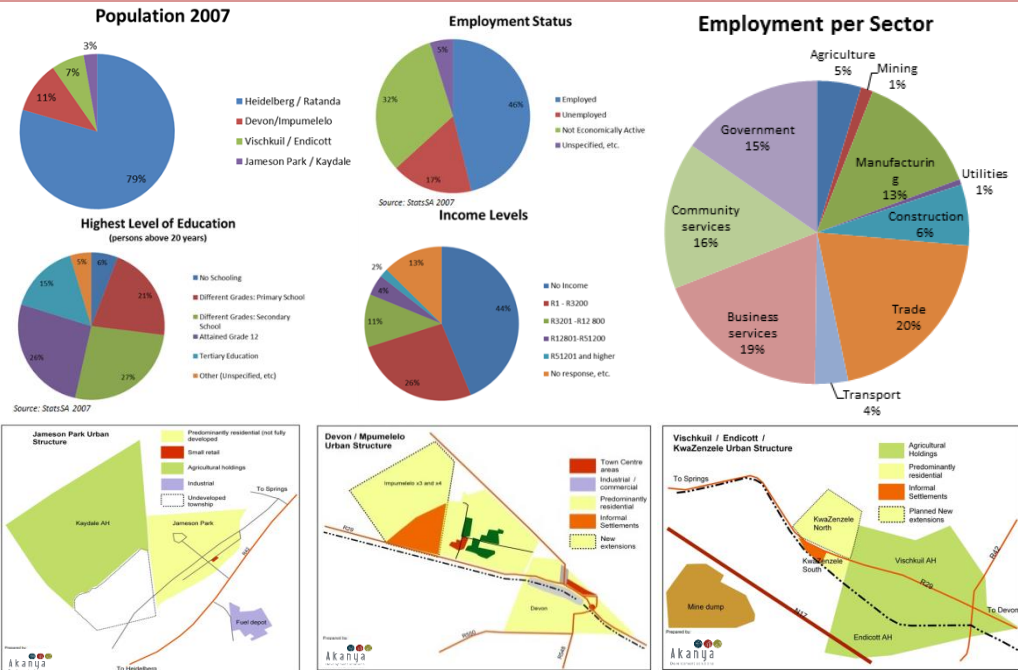


LESEDI LOCAL MUNICIPALITY SPATIAL DEVELOPMENT FRAMEWORK

2013

FIRST APOSTOLIC
FULL GOSPEL CHURCH
EST 1932 ON 10
ARCH BISHOP E. MALEKE
ARCH BISHOP I. NKOSI
ARCH BISHOP S.T. SEHLOHO
BISHOP D. TSHABALALA
EVANGELIST O. MOKHELE
ARCH BISHOP
MAT 20
SALEMI BA KENENG
TSHIMUNG KA NAKO
TSE FAPANENG

SNIPPETS FROM THE SDF



PROJECT DETAILS

Project Name : Lesedi Local Municipality Spatial Development Framework, 2012-13
 Client : Lesedi Local Municipality and the National Department of Rural Development and Land Reform (DRDLR)
 Project by : Akanya Development Solutions

PROJECT DESCRIPTION

At the time this project was undertaken, the Lesedi Local Municipality (LLM) had an approved Spatial Development Framework (SDF) dating from 2008, and a draft SDF (2010) which had not been adopted. Hence, the Department of Rural Development and Land Reform (DRDLR) commissioned the formulation of a reviewed SDF for the area. The new SDF included three precinct plans, namely, Endicott/Vischkuil, Jameson Park, and the N3 North Corridor.

The objectives of the SDF Review document were:

- To address the gaps in the previous two SDF documents
- To build on and in turn inform the Lesedi Integrated Development Plan
- To integrate the spatial aspects of other exiting LLM and District plans and documents, specifically, the Lesedi Nodal and Corridor Study (2009), the Sedibeng Human Settlement Plan (2012), the Lesedi Environmental Management Framework (2006), the Sedibeng Integrated Transport Plan (2008-13), and the Draft Urban Design Framework for selected areas in Lesedi (2012).

The review document addressed key issues in terms of the (1) alignment to legislative framework; (2) consultation processes; (3) regional context; (4) status quo analysis and synthesis; (5) spatial issues with the proposed interventions or strategies; (6) implementation guidelines regarding prioritisation and phasing; ending off with recommendation for monitoring, evaluation and reviewing the SDF.

PROJECT OUTCOME

The Lesedi Local Municipality Spatial Development Framework was concluded and subsequently approved by Council as the key yardstick for spatial structuring in the municipality.