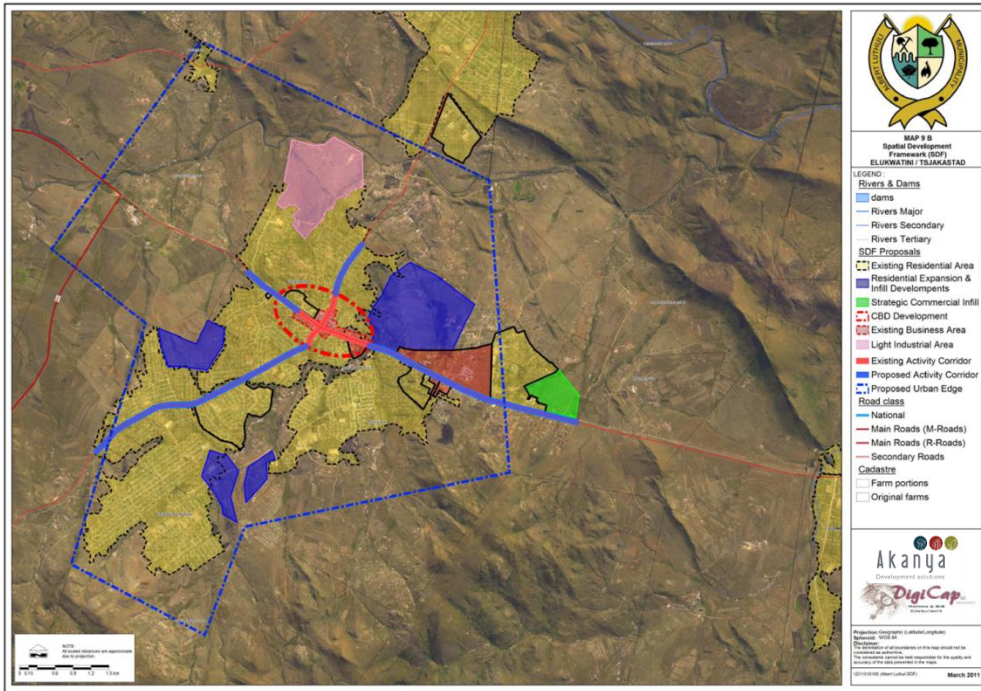


**CHIEF ALBERT LUTHULI LOCAL MUNICIPALITY**

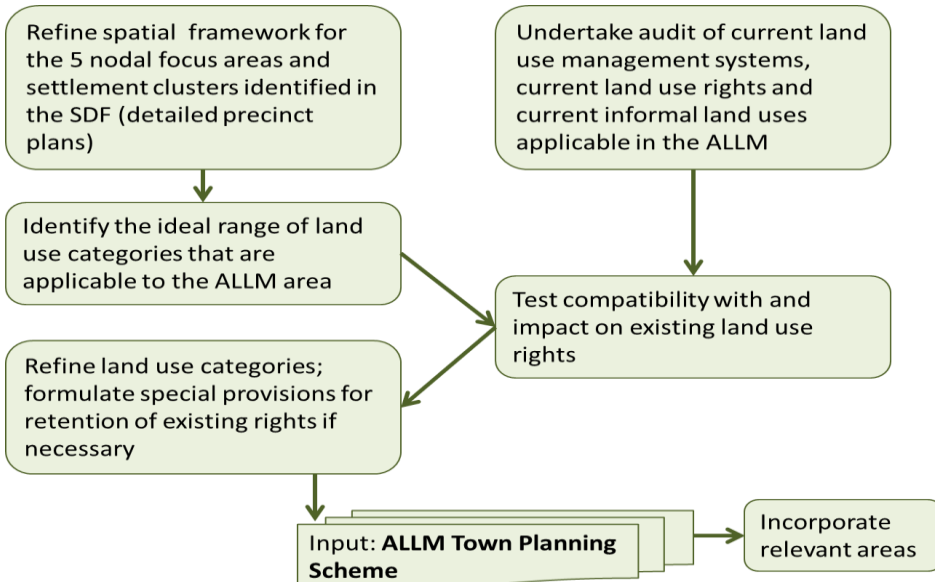
# **DRAFT SPATIAL DEVELOPMENT FRAMEWORK**

**February 2012**

## SNIPPETS FROM THE SDF



### Towards Land Use Management



## PROJECT DETAILS

Project Name : Chief Albert Luthuli Local Municipality Spatial Development Framework and Land Use Management Scheme, 2010-12  
 Client : Chief Albert Luthuli Local Municipality  
 Project by : Akanya Development Solutions

## PROJECT DESCRIPTION

In an attempt to ensure the sustainable future growth and development of the Chief Albert Luthuli area, and to comply with the Municipal Systems Act (MSA), Act 32 of 2000, Chief Albert Luthuli Local Municipality embarked on a process of formulating a Spatial Development Framework (SDF) and a Land Use Management Scheme for its area of jurisdiction. The SDF as a sector plan forms an integral part of the municipal Integrated Development Plan (IDP).

The objectives of the project included:

- Creating a spatially based policy framework whereby change, needs, and growth areas are managed positively to the benefit of everyone
- Improving the functioning of the local urban, rural and natural environment systems
- Identifying local opportunities for future local urban/rural development and natural environment and make recommendations as to where and how development of the open space system should be managed
- Establishing strategies and policies to achieve the desired spatial form, regarding movement and linkage systems, open space system, activity system and the overall land use pattern

In achieving these above objectives, the SDF helped indicate the desired spatial form and development patterns for the municipality. On the other hand, the LUMS dictates land use rights for specific parcels.

## PROJECT OUTCOME

Both documents were completed and adopted by Council, including land use frameworks that were prepared for the main nodes in the area.