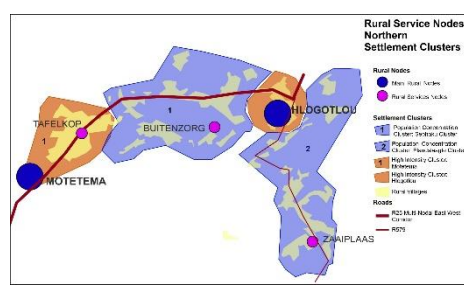
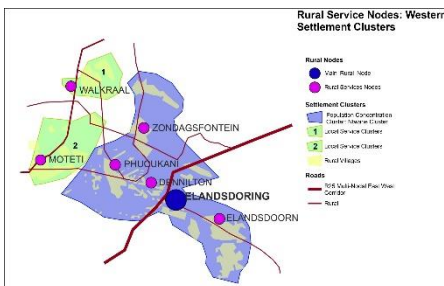
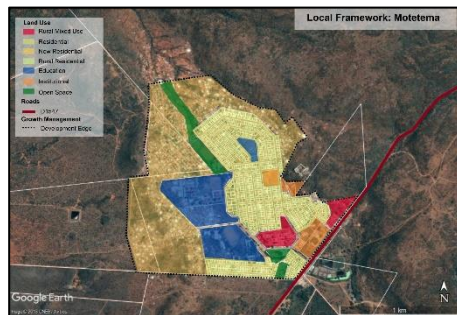
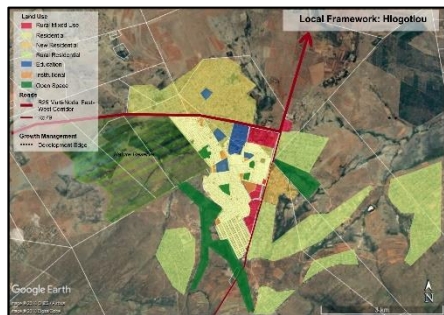
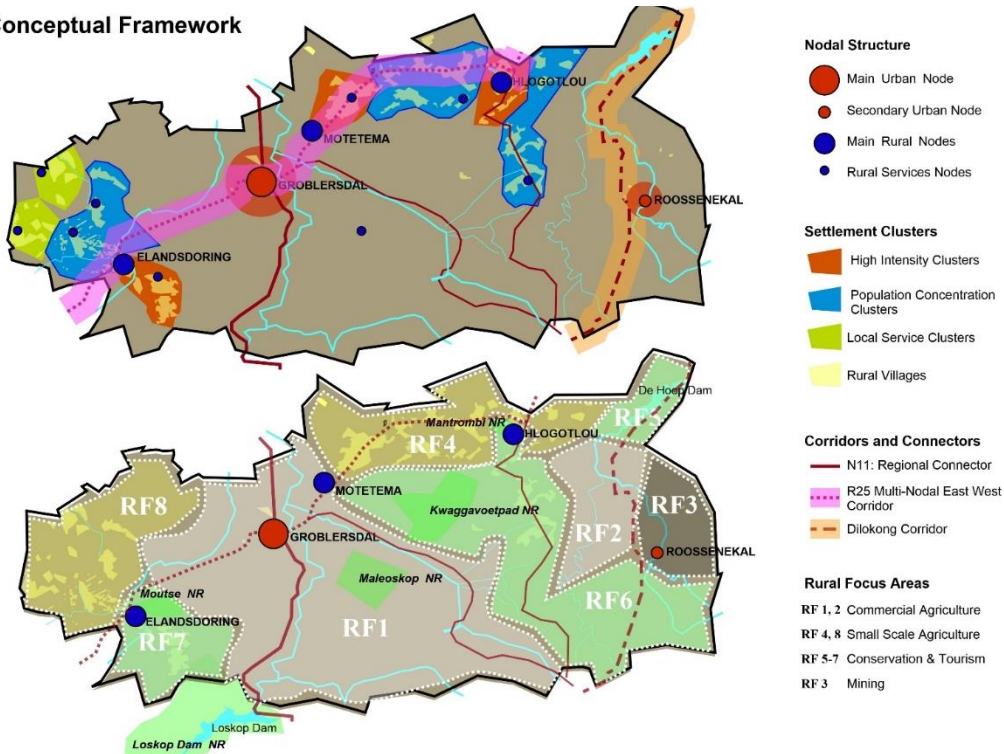




Elias Motsoaledi Spatial Development Framework

SNIPPETS FROM THE SDF

Conceptual Framework



PROJECT DETAILS

Project Name : Elias Motsoaledi Spatial Development Framework, 2018
 Client : Pfukani-Kusile Consulting for Elias Motsoaledi Local Municipality
 Project by : Akanya Development Solutions

PROJECT DESCRIPTION

Elias Motsoaledi LM is a rural municipality located in Limpopo Province. The main formal node is Groblersdal, but the municipality also has multiple rural settlements which are mostly under traditional leadership.

The Spatial Development Framework described to desired future spatial form of the municipality, and includes guidance on nodes, corridors, focus areas for rural development, as well as priority actions for implementation.

The key spatial strategies proposed for the area are:

- Strategy 1: Define Hierarchy and Roles of Urban Nodes
- Strategy 2: Define Hierarchy and Roles of Rural Nodes in Settlement Clusters
- Strategy 3: Identify and Define Development Corridors and Regional Movement Lines
- Strategy 4: Define Focus Areas for Rural Development

Due to the rural nature of the municipal area, the presence of extensive traditional authority areas and a strong agricultural sector, a lot of emphasis was placed on rural development interventions, aimed at both (1) establishing a strong network of rural nodes and (2) supporting the commercial and small-scale agricultural sectors. The Agri-Parks programme established by the Department of Rural Development and Land Reform was also mainstreamed as part of the rural development strategy for the area.

During the compilation process, municipal officials and office bearers, traditional leaders, as well as the intergovernmental Project Steering Committee were consulted. Upon completion, the final draft document was advertised for a final round of public comments.

PROJECT OUTCOME

The Spatial Development Framework was adopted to guide spatial development in the area.