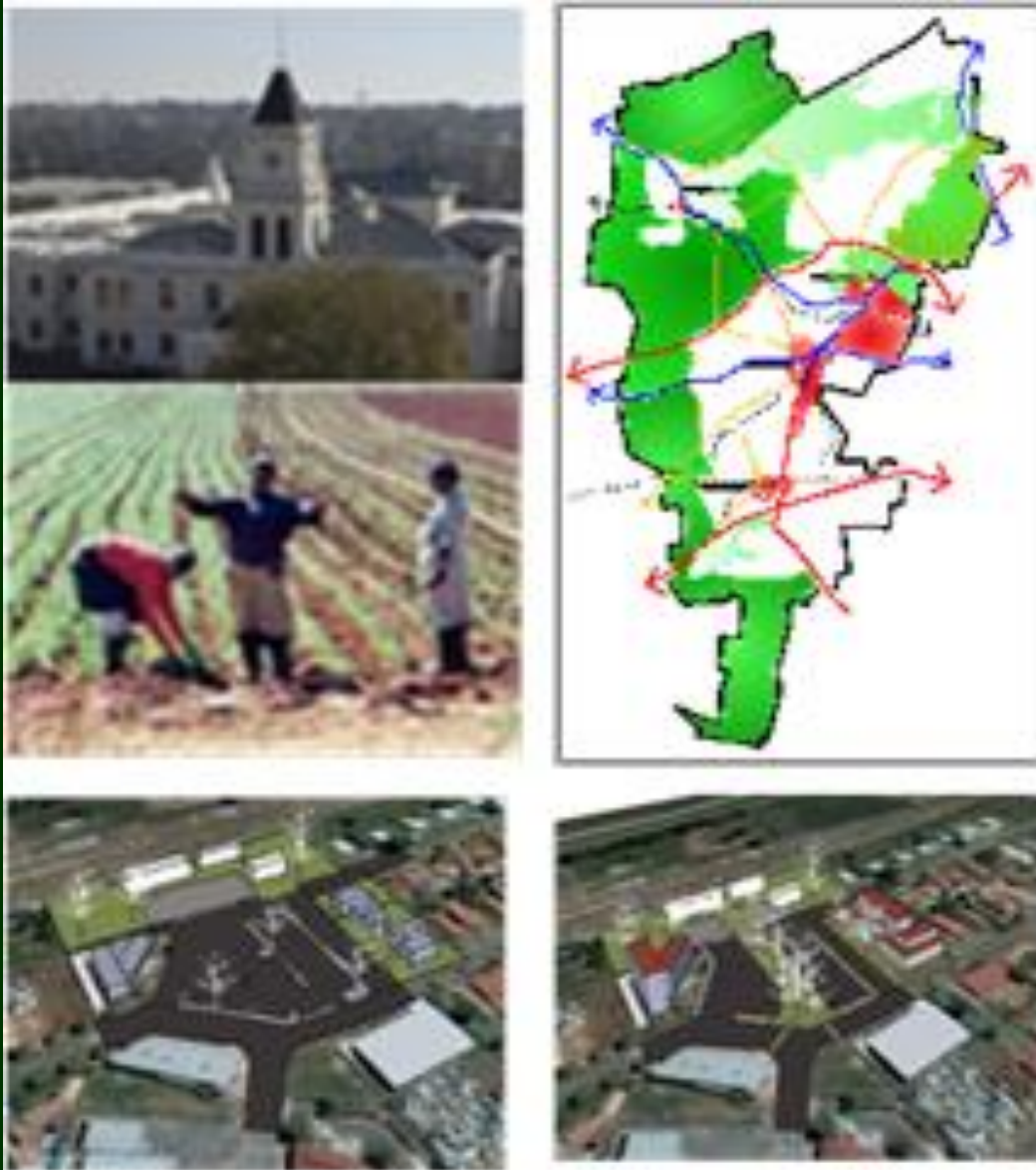


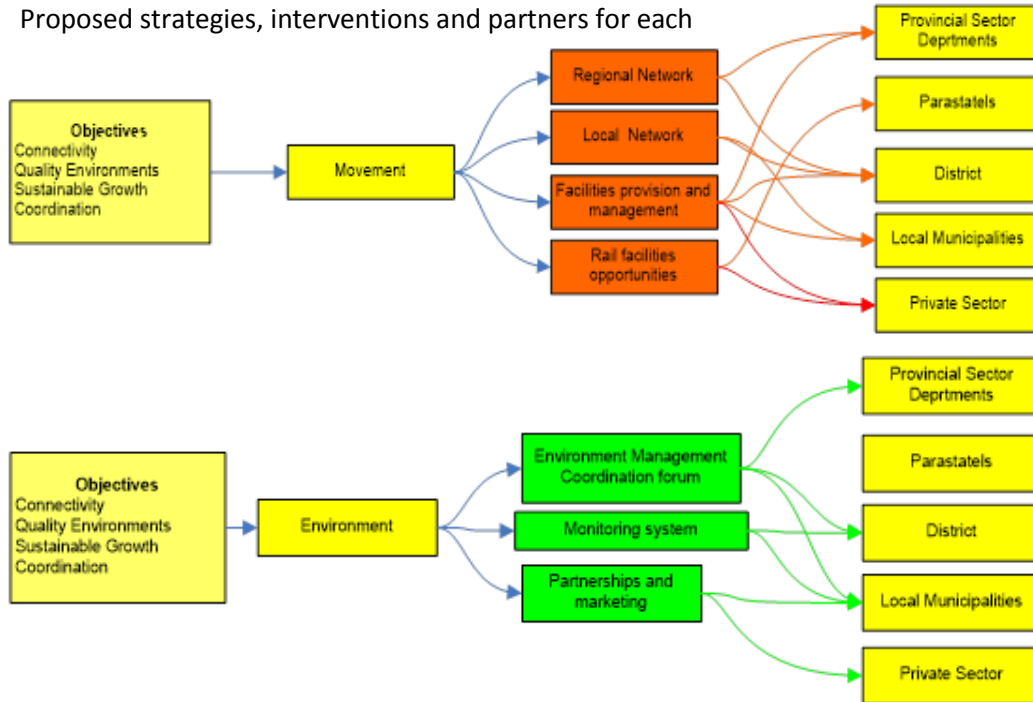
West Rand District Municipality



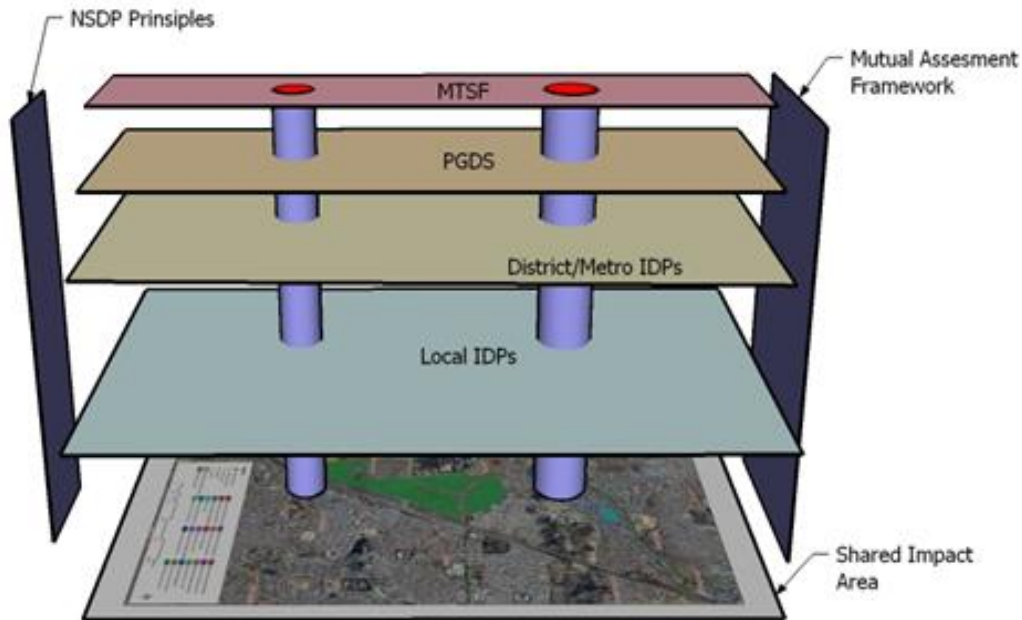
Draft Spatial Development
Framework
August 2008

SNIPPETS FROM THE SDF

Proposed strategies, interventions and partners for each



Intergovernmental Relations



PROJECT DETAILS

Project Name : West Rand District Municipality Spatial Development Framework, 2008
 Client : West Rand District Municipality
 Project by : Akanya Development Solutions

PROJECT DESCRIPTION

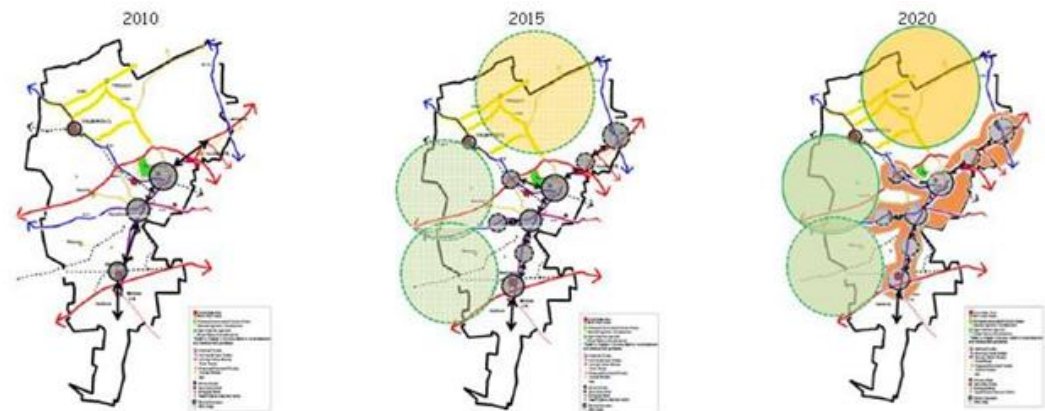
The purpose of the WRDM RSDf, West Rand 2020, was to chart a way forward for the current and future development of the region in preparation for the WRDM becoming a metropolitan municipality by 2021. As a regional SDF, it is important to note that the RSDf is not a formula, neither is it a register of every existing detail. Instead, the RSDf aimed to provide enough guidance and description regarding a preferred development approach, whilst still allowing for choices to be made. The RSDf does not specify exactly the pace at which areas should develop, but rather how areas should be developed and what the important issues are that should influence the timing of development. The RSDf contained a look into the (1) planning background; (2) context and trends; (3) growth scenario; (4) strategic framework; (5) guidelines and statements; and (6) implementation pointers.

The proposed strategies that were needed to develop the district area included:

- Managing the growth of the district
- Promoting and managing regional and local accessibility
- Providing and managing environmental areas and an open space
- Providing and managing environmental areas and an open space network.

PROJECT OUTCOME

The WRDM RSDf is an approved document that guides land development in the district.



Conceptual representation of the three Spatial Growth Stages